

# Ladtech® Rings Adjust to Any Grade and Slope!



## Don't just take our word for it...

"In 1999 the Borough of Elizabethtown began using the Ladtech Polyethylene Manhole Adjusting Rings. To date, the Ladtech rings have been installed at over fifty locations throughout the borough of Elizabethtown. We have found the rings to be durable, easy to fit and economical. We have found the tapered rings essential when adjusting manhole frames to the crown of the street. The Borough of Elizabethtown has been pleased with the performance of the Ladtech Rings and will continue to use them."

Randy P. Houser  
Chief Operator  
Elizabethtown, PA  
March 8, 2002

*Don't worry  
about the risk...  
the only one you take  
is to not make a change!*



# LADTECH INC.

6704 Meadowlark Court  
Lino Lakes, MN 55038

Direct: (877) 235-7464  
Fax: (866) 397-7571  
E-mail: [adjring@ladtech.com](mailto:adjring@ladtech.com)  
Website: [www.ladtech.com](http://www.ladtech.com)

**Recognized as a Top 10 Best  
Time-Saver of the Decade!**

*By Commercial Building Magazine, Oct. 2001*



*HDPE Adjusting Rings  
By Ladtech® Inc.*



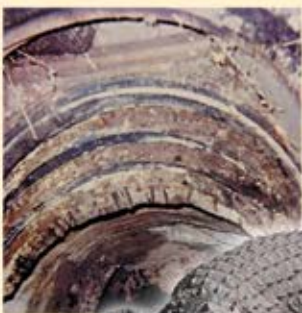


**L**adtech's light weight adjusting rings are manufactured from 100% polyethylene recycled plastic. At approximately 6lbs., these rings are durable and provide for quick and easy installation.

- Mortarless System
- Engineered
- Cost Effective
- Specifiable and Inspectable
- **Guaranteed!**

*No one else can say what we say...  
No one else can do what we do!*

*Is There a Crocodile in Your Man Hole Chimney Section?*



If you have discovered a deteriorated leaking mess in your man hole sewer system, it's time to make a change and send the croc's out back where they belong.



Ladtech's HDPE adjusting rings will assure you a dependable quality product that will meet and exceed all of your required needs.

**Tested • Used • Proven**



**Try HDPE Rings on your next project!** Tested to withstand high load capacity in excess of AASHTO's HS 25 Specs. Also provides and maintains material quality and performance assurance (ASTM D-1248)

## *For More Information...*

Please complete this form and fax or e-mail us your info.

Fax Toll Free: (866) 397-7571

E-mail: [adjring@ladtech.com](mailto:adjring@ladtech.com)

### **Requested Information:**

- Flyers       Catalog  
 CD-Rom     Install Video

### **What type of company do you represent?**

- Engineering Firm     Contractor     Other

Name \_\_\_\_\_

Company \_\_\_\_\_

Address \_\_\_\_\_

City, State, Zip \_\_\_\_\_

Phone \_\_\_\_\_

Fax \_\_\_\_\_

E-mail \_\_\_\_\_

Web site \_\_\_\_\_

Comments \_\_\_\_\_

\_\_\_\_\_

\_\_\_\_\_

\_\_\_\_\_

## ***IPEX PIPELINE Municipal System***

Three years after installing the Ladtech HDPE Adjusting Rings on a busy street, the City of Windsor, Ontario, Canada, believes they have found the answer-an effective solution to the labor intensive replacement of broken rings. Since 1997, Windsor has been using the rings for the construction and reconstruction of almost 200 manholes. "Windsor deals with the Highest volume of Truck traffic combined with the freeze and Thaw cycles, and the traditional adjusting rings, they simply cannot stand up."

- Pete Matheson, Sewer Superintendent